



JOANA PERRY SAES

BIOGRAPHY

University lecturer, Equipment and space designer and Researcher with a focus on inclusive, equitable and social design, colour, health, neurodiversity, and therapeutic and academic spaces. Is a researcher / collaborating member at CIAUD – Center for Research in Architecture, Urbanism and Design, of the Faculty of Architecture of the University of Lisbon and is also a researcher in the team of the Research Group Cor e Luz, LabCor, also belonging to CIAUD. The PhD in Design (2019), by FA-UL, focused on the problems felt in inclusive schools, with regard to therapy spaces and workspaces for students with Special Educational Needs. This theme allowed to open the research to different areas of Design, but with which they work in an interdisciplinary and transdisciplinary context. Thus, developed articles in the areas of the research, and others that appeared in co-authorship, with fellow professors and researchers, also in Design.

Currently collaborates, as an invited assistant professor, with Instituto Superior Miguel Torga, in Coimbra, and as an invited assistant professor, with Instituto Politecnico da Lusofonia, in Lisbon.

Secretary of the Board of Associação Portuguesa da Cor (2019-2021), also developing activities such as organizing lectures, webinars, and workshops. Participated, as a guest trainer, in photography workshops at Instituto Superior Dom Dinis, Marinha Grande, and at Universidade Lusófona de Humanidades e Tecnologias, Lisbon. Also carried out photography work for the elaboration of Design and Painting catalogs (2015-16) and in the development of stands and stores for the company J&L Selecções, Lisbon (2006-2010).

Takes part in scientific committees at conferences, collaborating as a reviewer in magazines and books, of which the following stand out: Conference: 17th Color Conference 2022, of the group: GDC - Associazione Italiana Colore, Revista Interações, Sociedade e as Novas Modernidades; books: Color in Health, Wellbeing and Comfort (Portuguese edition) and “Colour in Health, Wellbeing and Comfort (English edition), under APCor, LabCor and GICL – CIAUD organization.

FIELD OF RESEARCH

Design - inclusive, equitable and social design, colour, health, neurodiversity, therapeutic and academic spaces, blindness and autism.

CONTACTS

CienciaVitae: E01F-6725-3CBA

Email: joana.perry.saes@gmail.com

2019-2023 **Design of Therapy Rooms in Inclusive Schools – 2nd phase.**

Research Line

Inclusive Design, Neurodiversity, Inclusive Schools

Team

Joana Perry Saes (coord.).

Abstract

The first phase of the project presented the proposal for guidelines for the design of therapy rooms in inclusive schools, suggesting the creation of “neutral” spaces that allow therapies to be carried out in a school environment. It also proposed adapted solutions for spaces to be designed: snoezelen room adapted for the Helen Keller Center; and snoezelen/CAO room for the Amorama association. The first phase of the project was completed when the PhD research was delivered, in March 2019. The second phase includes the implementation of these spaces in selected locations, taking into account the needs of their users. A proposal was presented in November 2019 to the Helen Keller Center for the implementation of a snoezelen room. The same project is in phase II, awaiting funds to begin its implementation.

Methodology

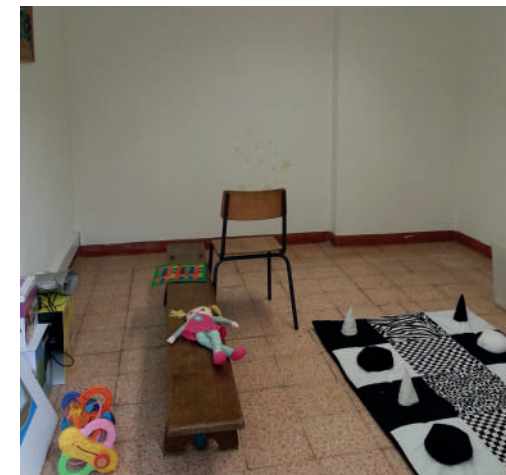
In the first phase, the project used a mixed methodology based on observation, interviews with experts, teachers, assistants and students, questionnaires, literature review, and subsequently carried out a case study at 1 inclusive school (Centro Hellen Keller) and 2 associations (AMORAMA and APPDA).

Project Relevance

This project aims to create a therapeutic environment in schools, benefiting its users, allowing them to reduce the time they are absent from school and also use the therapeutic space with their peers, benefiting social contact.

Results

The first phase of the project resulted in the thesis, as a document with guidelines for the design of therapy rooms in inclusive schools, also resulting in several scientific articles and book chapters, based on the research and research results for the said project.





Dissemination

PUBLICATIONS

- 2022 Saes, J., Guerreiro, A.
Design in a Context of Social Equity: Therapy Rooms in Schools. In: Daniel Raposo, Nuno Martins and Daniel Brandão (eds) Human Dynamics and Design for the Development of Contemporary Societies. Proceedings of the AHFE 2022 Virtual Conference, July 26-28, 2022, USA, AHFE Open Access, vol 25., pp.280-288 . ISSN 2771-0718.
- 2021 Costa M.L., Saes J., Rala S.
Design, Meaning, and Intention: Communication in Times of a Pandemic. In: Rebelo F. (eds) Advances in Ergonomics in Design. AHFE 2021. Lecture Notes in Networks and Systems, vol 261. Springer, Cham.
- 2019 Saes, J.
Design of Therapy Rooms in Inclusive Schools. Thesis presented to the Faculty of Architecture of the University of Lisbon, in the context of obtaining a PhD degree.
- 2019 Saes, J.
Colour applied to TEACCH and Snoezelen rooms and therapies. In: Cheung, V. and Westland, S. (Eds.) Journal of the International Colour Association: 23, pp. 15-24. ISSN: 2227-1309.
- 2018 Saes, J.
Colour and therapies in TEACCH and Snoezelen rooms. Awarded 1st runner-up Students Awards, by International Colour Association (AIC), Conference 2018, Lisboa, Portugal. In: AIC – International Colour Association (ed.). Proceedings of AIC Interim Meeting: Colour and Human Comfort. 26-28 Septiembre. Lisbon: AIC – International Colour Association and APCor - Associação Portuguesa da Cor. pp. 675-680. ISSN: 2617-2410, eISSN: 2617-2429, ISBN: 978-0-64844724-4-5.

COMMUNICATIONS

- 2022 Saes, J.,
Design of Therapy Rooms in Inclusive Schools, ‘Snoezelen Room’ - a Case Study. Seminar on Sensory Stimulation Therapy – Snoezelen ARPILF 2022/10/26 (Almada, Portugal). By invitation.
- 2022 Saes, J., Guerreiro, A.
Design in a Context of Social Equity: Therapy Rooms in Schools. 13th International Conference on Applied Human Factors and Ergonomics, AHFE (2022) International Conference 2022/07/28, United States of America (online). By submission.
- 2021 Costa M.L., Saes J., Rala S.
Design, Meaning, and Intention: Communication in Times of a Pandemic. 12th International Conference on Applied Human Factors and Ergonomics (AHFE 2021) 2021/07/27, United States of America (online). By submission.
- 2018 Saes, J.,
Color and Therapies in TEACCH and Snoezelen rooms. Communication presented in the context of a public and extended conference/lecture, at the Department of Psychology, at Universidade Autónoma de Lisboa, 2018/12, Lisbon, Portugal.
By submission.
- 2018 Saes, J.,
Colour and therapies in TEACCH and Snoezelen rooms. Interim Meeting AIC LISBOA 2018, Colour and Human Comfort. Associação Portuguesa da Cor (Lisbon, Portugal). ISSN: 2617-2410, eISSN: 2617-2429, ISBN: 978-0-64844724-4-5.
By submission.